

OUR BENCHMARK FOR EXPORT OF 476 M3 LPG/PROPANE STORAGE TANK IN SINGLE PIECE

Presented by

Spark engineers

Plot No: 429, J- Block, MIDC,
Bhosari, Pune-411026

Ph: +91 20 66113897

Web: www.sparkengineers.org



At Mumbai Port Our Tank Ready For Loading On Ship



INTRODUCTION

- We are glad to inform you that we have completed very prestigious order to supply of 4 no's x 200 MT LPG/Propane Storage tank with REGO safety fittings for a prestigious client in FIJI ISLAND and delivery to CIF FIJI ISLAND



TECHNICAL SPECIFICATIONS OF LPG TANK

- ▶ Design code : PD 5500
- ▶ Water capacity : 476500
- ▶ Gas Capacity : 200MT
- ▶ Tank diameter : 4340 ID
- ▶ Shell thickness : 25 mm
- ▶ D/E thickness : 16 mm
- ▶ Overall length : 33700 mm
- ▶ Weight of tank : 110 ton
- ▶ Delivery time : 14-16 weeks



WELDING QUALITY TEST



SAW welding



Radiography of tank

Automatic SAW Welding by column & boom on automatic rotators



FINAL INSPECTION OF TANK



AUTOMATIC SAW WELDING QUALITY

High Quality

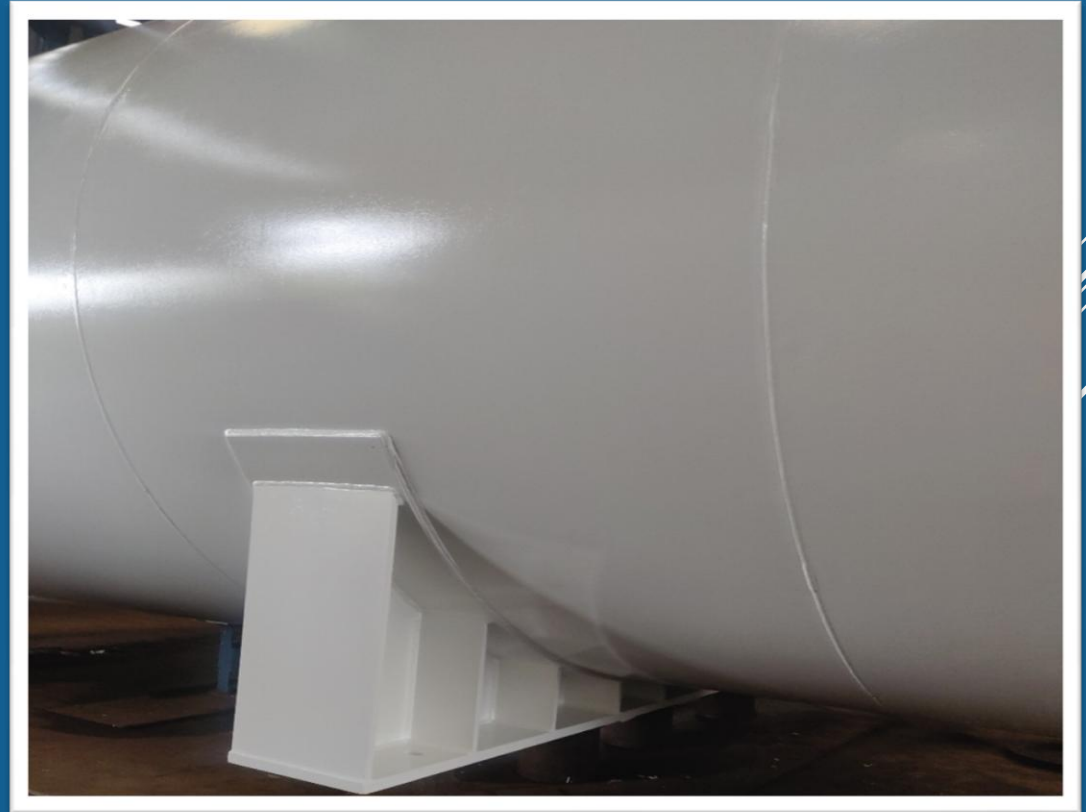
High Production Range



Automatic SAW welding quality

High quality

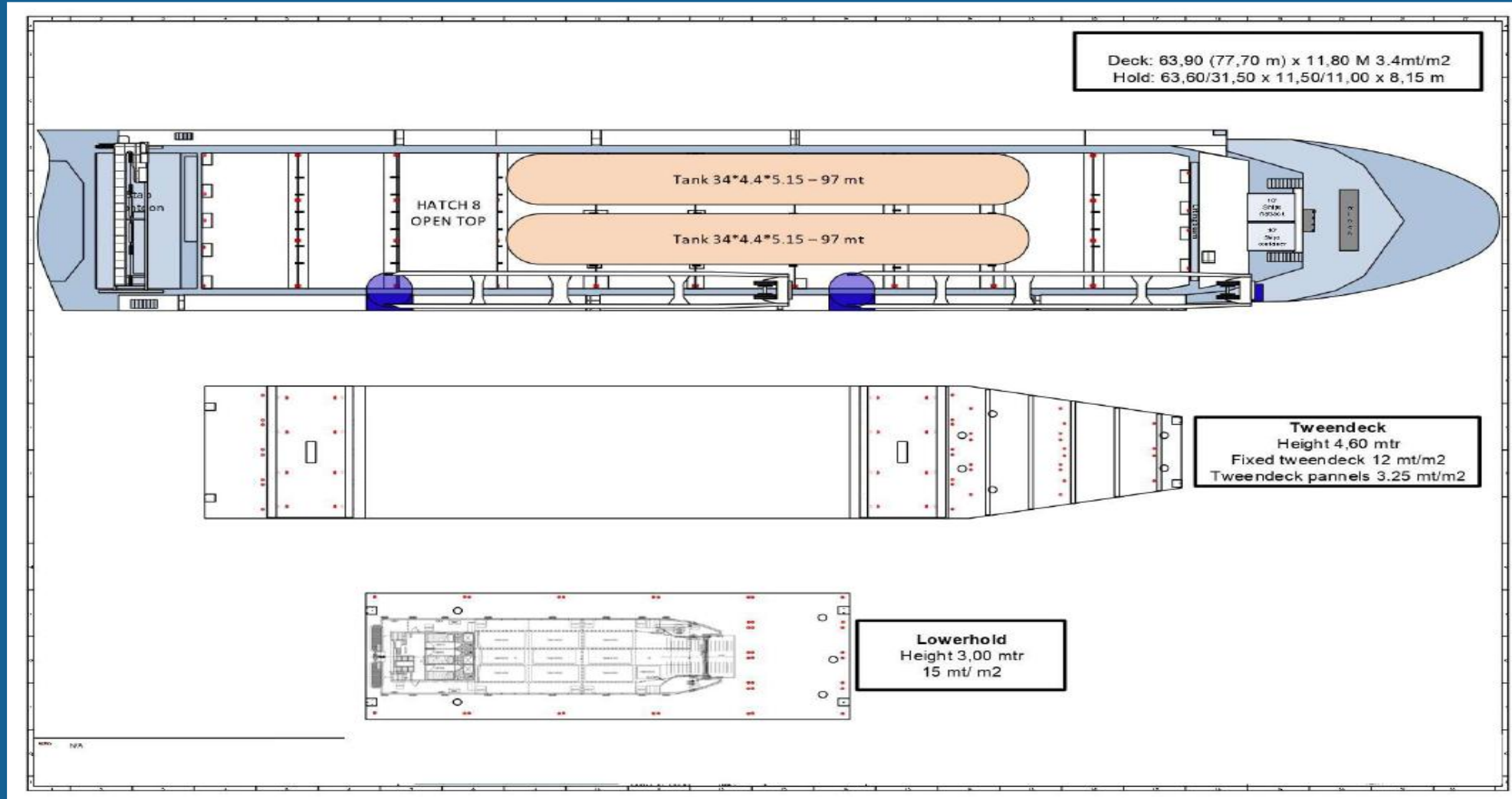
High production range



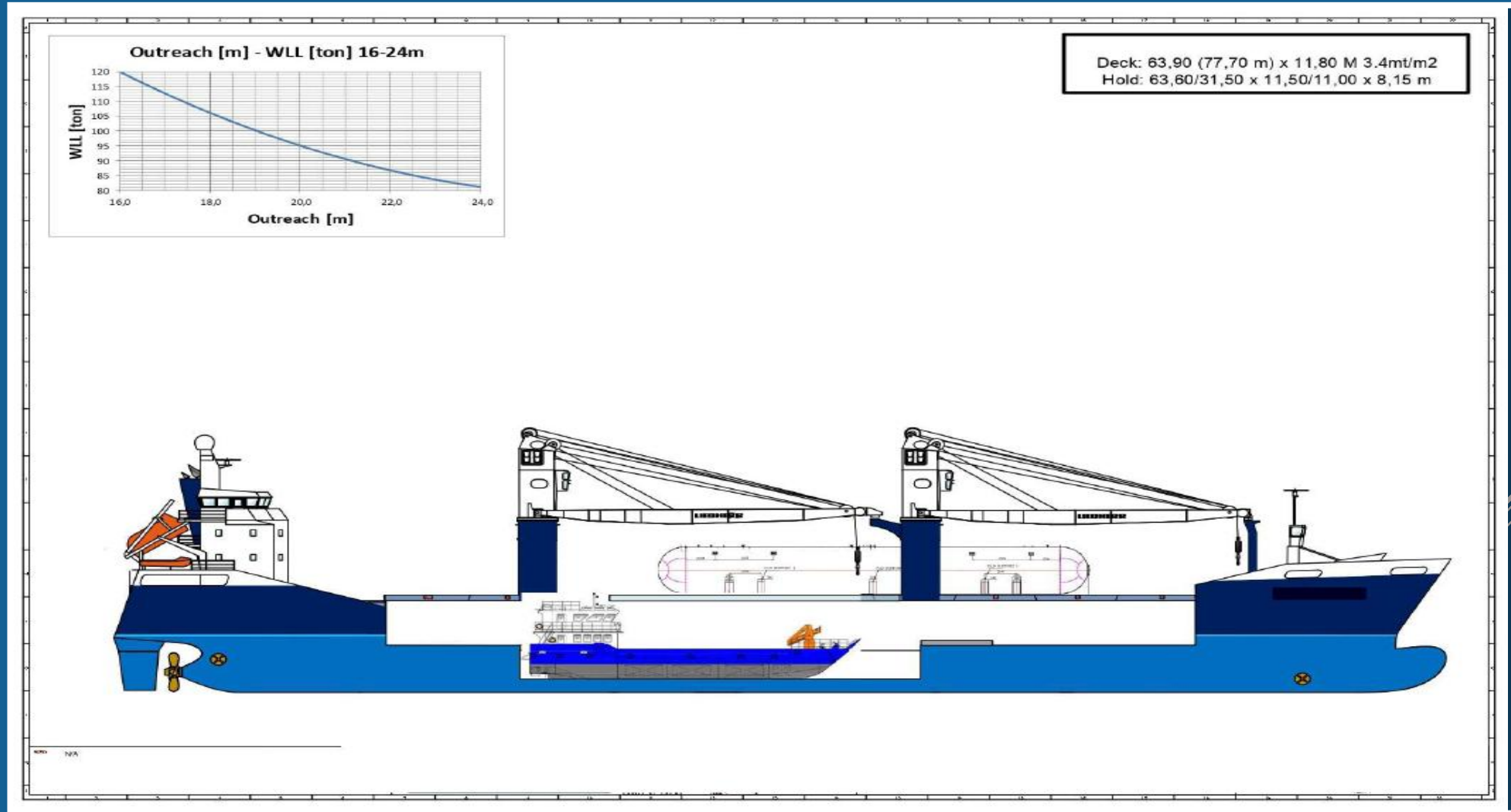
FINAL PRODUCT



SHIPPING DRAWING



SHIPPING DRAWING



SHIPPING

This tank is being fabricated in one single piece and will be transported from Mumbai port till FIJI port in one single piece. Loading, unloading of tanks at ship and supervision will done by our technical expert team.



PHOTOGRAPHS SHOWING PACKAGES DURING LOADING ON BOARD THE VESSEL



PHOTOGRAPHS SHOWING STOWAGE & LASHING OF PACKAGES LOADED ON BOARD THE VESSEL



UNDERDECK LOADING INTO SHIP

PHOTOGRAPHS SHOWING STOWAGE & LASHING OF PACKAGES
LOADED ON BOARD THE VESSEL



THE ABOVE EXPORT ORDER HAS ADDED A FEATHER
IN OUR CAP WITH YOUR GOOD WISHES AND
CONTINUED SUPPORT

Thank you !!

